

Visual Story: Art Gallery of York University (AGYU)

Welcome to the Art Gallery of York University. The AGYU is an art gallery located on York University's Keele Campus at 4700 Keele Street in Toronto, Ontario. The gallery is in the north east corner of the Accolade East Building at 83 York Boulevard.

This document is a visual resource that will help you prepare for and understand what to expect during your visit to the AGYU.

agYU

Getting Here: Finding the Building



Map of the AGYU and surrounding area.

This is a map of the area surrounding the Art Gallery of York University.

You can get to the AGYU by foot, bike, car, or the TTC.

Legend:

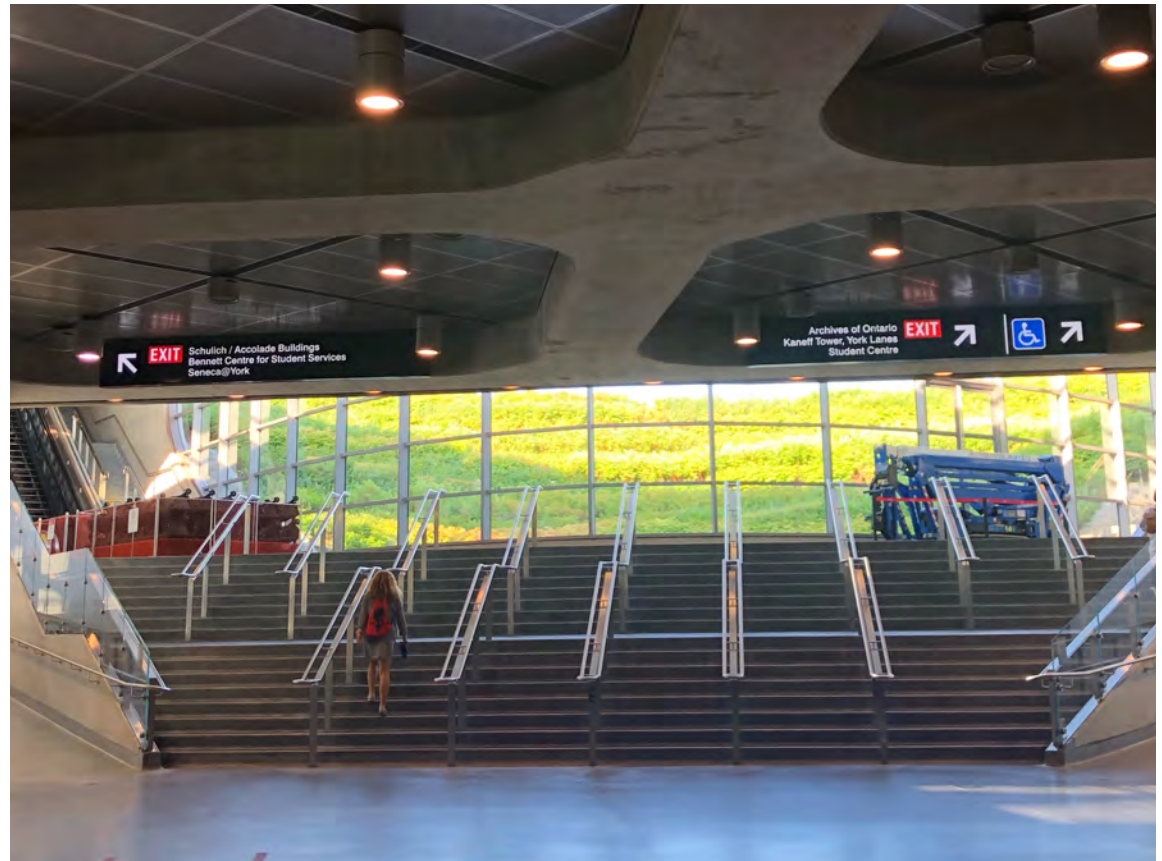
- A** Accolade East Building Main Entrance
- B** Accolade East Building South East Entrance
- C** York University Subway Station North Exit Accessible exit and Wheel Trans stop
- D** York University Subway Station South Exit towards Schulich/Accolade Buildings
- E** Student Services Parking Garage Entrance
- F** Student Services Parking Garage Pedestrian Exit
- G** Ring Locks & Bike Rack

Getting Here: Taking the TTC

If you are taking the subway, take line 1 to York University Station. The station has two exits.

The exit on the right is wheelchair accessible. Should you require an elevator, use this exit to get to the gallery. This exit takes you to the station's north exit. The WheelTrans stop is also located at this exit. To get to the gallery, take the sidewalk on the west side of the subway station to the station's south entrance. The walk is about 100 metres.

The exit on the left, towards Schulich/ Accolade Buildings, takes you to the south exit of the subway station directly across from the entrance to the Accolade East Building. This entrance has an escalator and a staircase. It is not wheelchair accessible.



York University Station exits.

Getting Here: Finding the Building

Coming from the subway, this is the main entrance to the Accolade East Building, located on the south west corner of York Boulevard and Ian MacDonald Boulevard. Cross the street using the crosswalk and enter the doors on the north east corner of the building.



View of the Accolade East Building from the south exit of York University Station.

After you enter the main doors, the gallery is down the hallway to your right.



Entrance to the AGYU.

Getting Here: Driving or Biking to Campus

Cars:

If you are driving, park at the Student Services Parking Garage. The parking garage can be accessed from James Gillies Street. Limited street parking is also available along Fine Arts Road.

Don't forget to pay for parking!

Parking Fees:

Weekdays: \$2.50 per 30 minutes (\$20.00 max)

Weekdays after 6p.m.: \$2.50 per 30 minutes
(\$8.00 max)

Saturday: \$7.00 flat rate

Sunday: \$5.00 flat rate

You can use the HonkMobile App or HonkTAP to pay from your phone. Learn more on the York University Parking Services website: <https://www.yorku.ca/parking/honk-mobile-app/>.

Bikes:

There are three ring locks located beside the Accolade East Building along Ian MacDonald Blvd. A double-sided grid bike rack is also available south of the ring locks.



Entrance to the Student Services Parking Garage on James Gilles Street.

Getting Here: Finding the Building

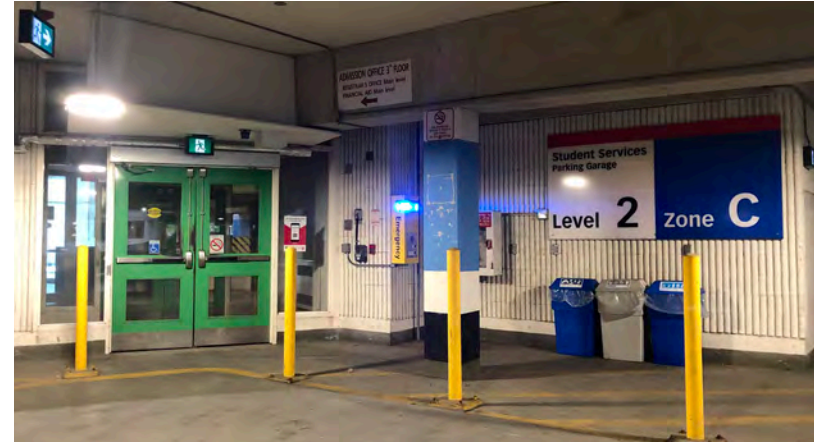
From the Student Services Parking Garage:

The parking garage is about 300 metres from the gallery. Exit the Student Services Parking Garage through the green doors on Level 2 Zone C and continue to exit the building. The exit is on the south east corner of Ian MacDonald Boulevard and Fine Arts Road. The south east entrance to the Accolade East Building is located on the north west corner of Ian MacDonald Boulevard and Fine Arts Road. Cross the street at the crosswalks and enter the Accolade East Building.

Once inside the building, walk straight down the hallway towards the main entrance. The AGYU is located at the end of the hallway to the left.

From the Bike Rings:

Walk north along Ian MacDonald Boulevard until you reach York Boulevard. Enter the Accolade East Building at the south west corner of Ian Macdonald Boulevard and York Boulevard.



Student Services Parking Garage Exit.



South east entrance to the Accolade East Building. View from the Student Services Parking Garage exit on the south east corner of Ian MacDonald Boulevard and Fine Arts Road.

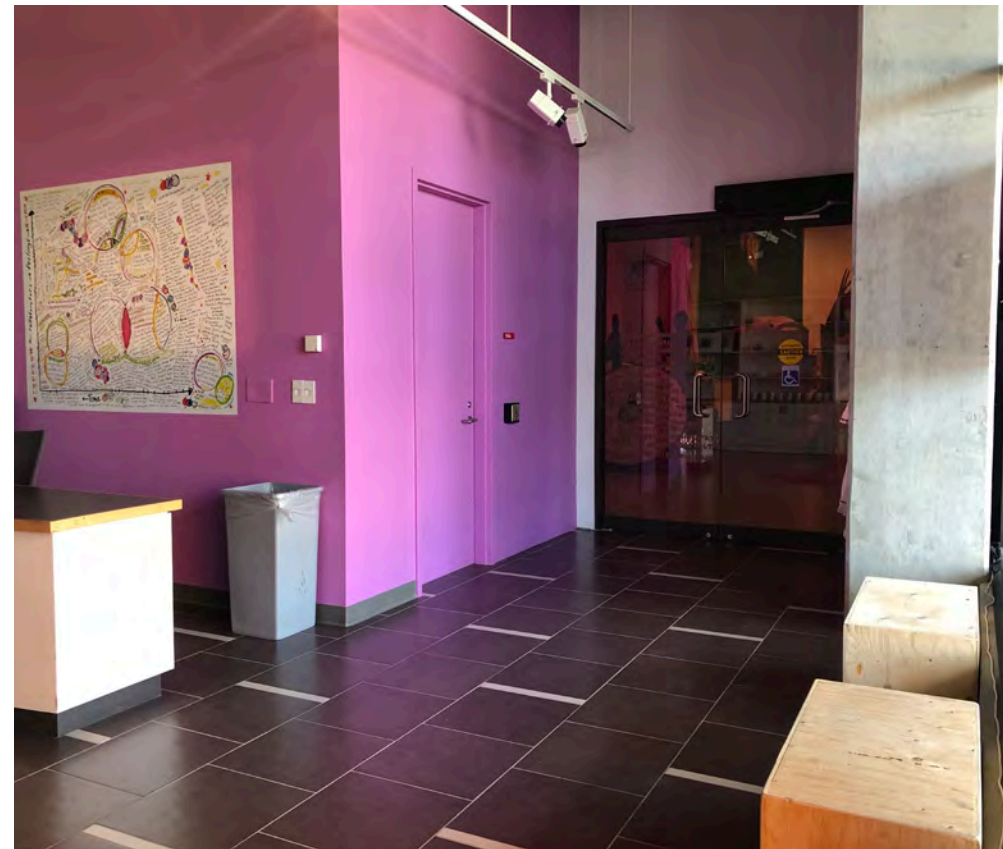
Inside the Building: The Lobby

Upon entering the gallery you will be in the lobby. In this space you will find a gallery attendant at the front desk and a place to sit.

The lobby may appear different based on the current exhibition.



Lobby at the AGYU. View from outside the main entrance.



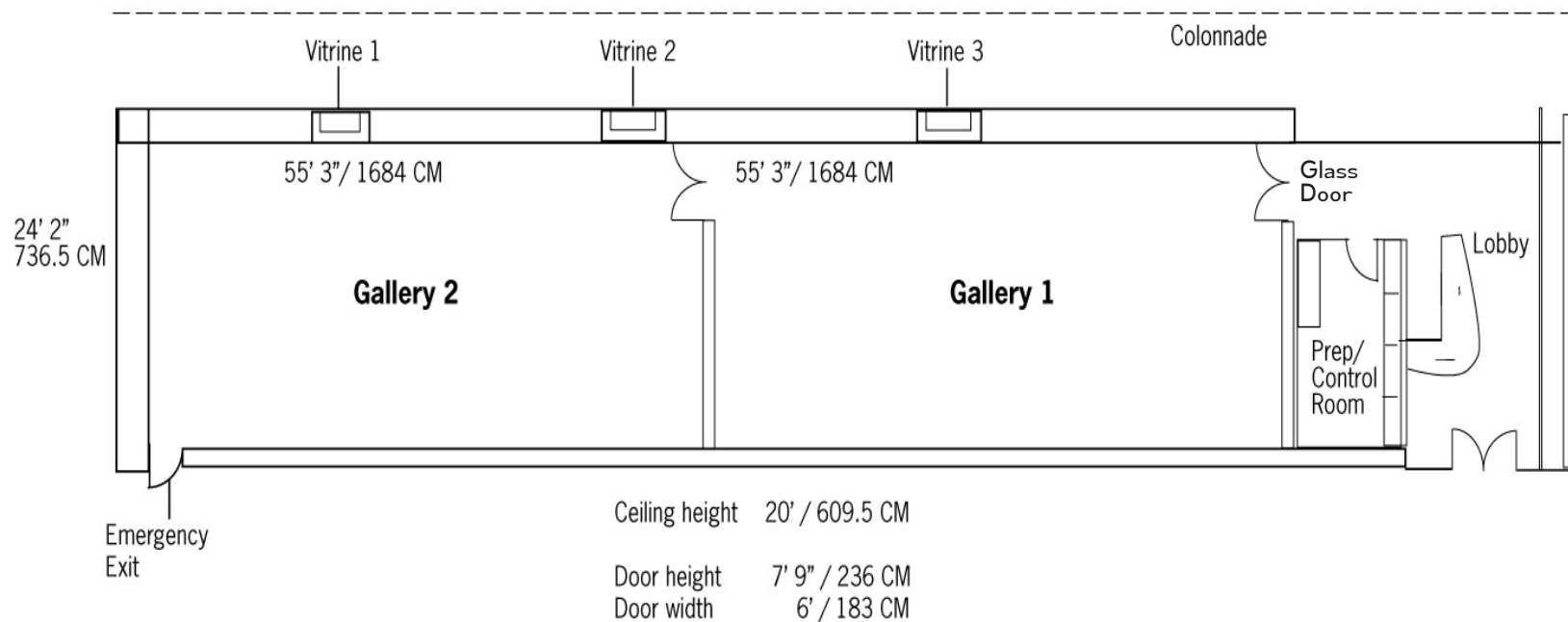
Lobby at the AGYU. Entrance to the galleries.

Inside the Building: The Gallery

At the end of the lobby is a glass door leading to the exhibition space.

Each exhibition looks different, however, this floor plan illustrates the general layout of the space.

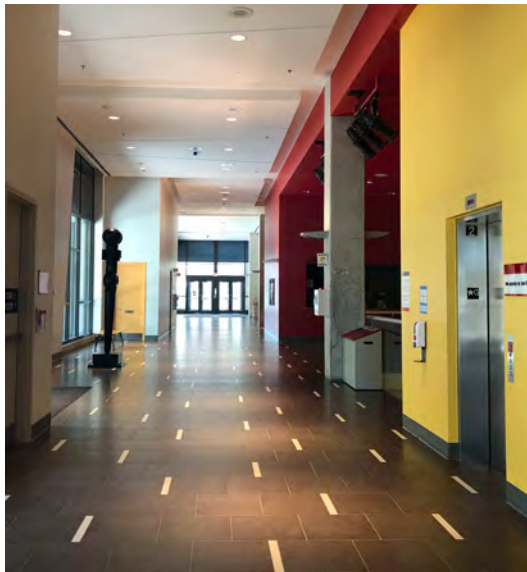
Art Gallery of York University (AGYU) Floor Plan



Inside the Building: Bathrooms



Staircase and hallway used to access the bathrooms.



View from halfway down the hallway. The elevator is located on the right. The gender-neutral bathroom is located near the end of the hall on the left.

To access the bathrooms, take the staircase just outside of the gallery to the basement. Male and female bathrooms are located down the hall on the right.

These bathrooms are also accessible by elevator. To access the elevator, go around the staircase and continue down the hallway. Halfway down the hall there is an elevator on the right. Take the elevator to the basement (B). The elevator opens directly across from the bathrooms. Each bathroom has a wheelchair accessible stall.

Alternatively, near the end of the main floor hallway, across from the Price Family Cinema, there is a single-stall gender-neutral bathroom with a changing table. This bathroom does not have an automatic door.

Inside the Building: Taking a Break

If you need a break from the exhibition, the lobby offers a calmer place to sit. Additional seating is available in the lobby of the Accolade East Building.

Some exhibitions may feature bright or flashing lights, loud noises, or scents. This information will be posted in the lobby.

Due to COVID-19 safety protocols, capacity in the gallery is limited to 15 people.

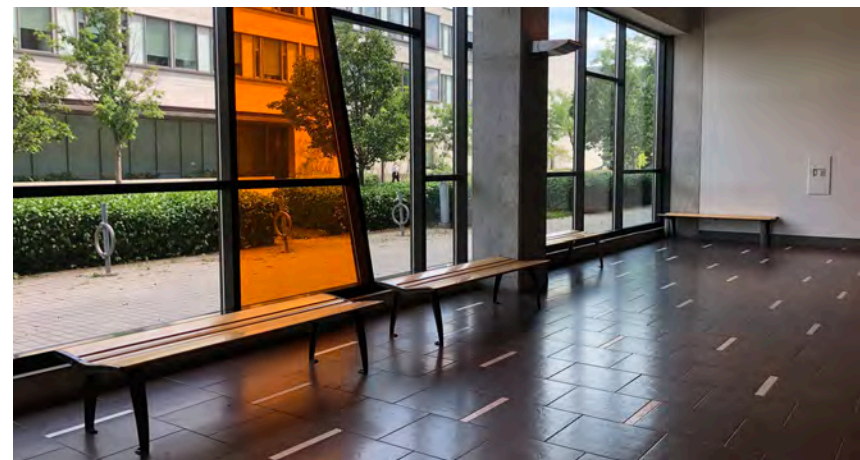


Seating in the AGYU lobby.

Snacks and Drinks:

Snacks and drinks can be purchased from the Schulich Market Cafe, which is located in the Schulich Building, east across Ian Macdonald Boulevard.

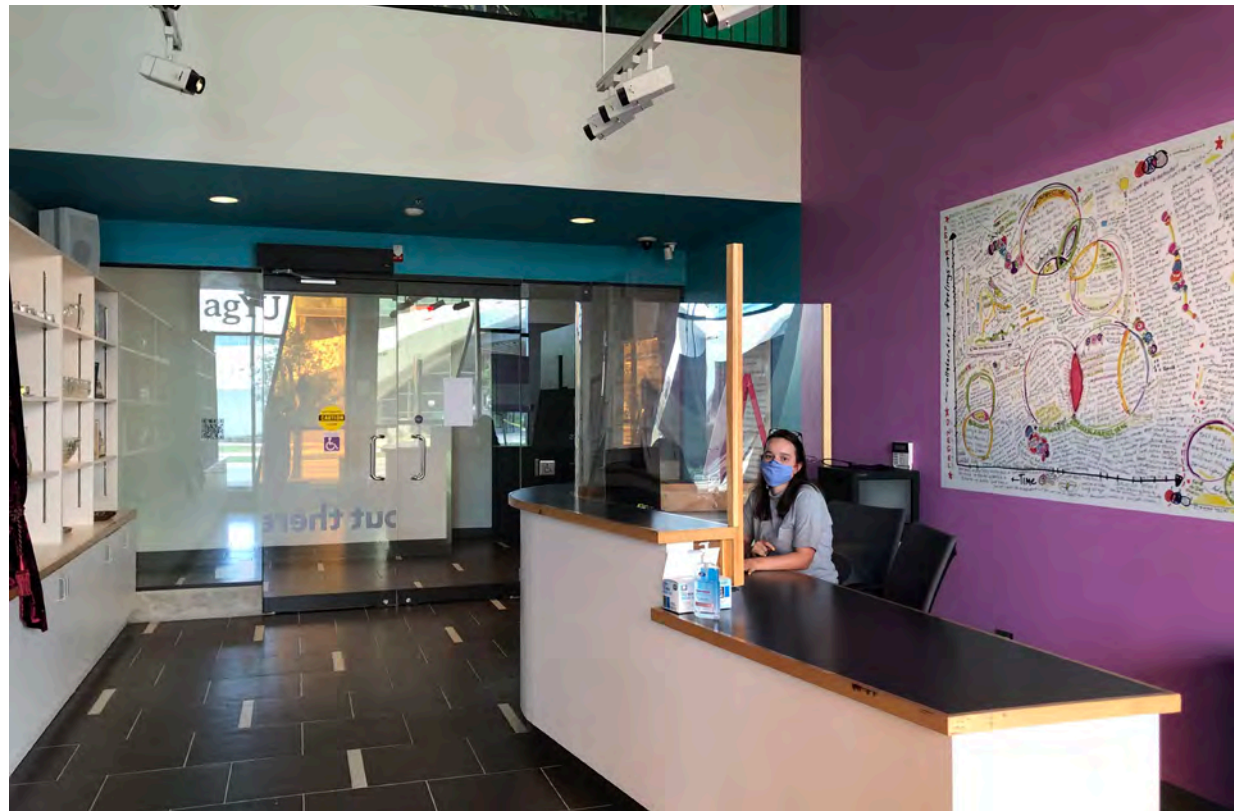
On the north side of York Boulevard there is a Shoppers Drug Mart and a range of fast food restaurants. Their hours may vary due to COVID-19.



Seating in the lobby of the Accolade East Building.

Inside the Building: Getting Help

If you need assistance at any point during your visit, the gallery assistants seated at the front desk are always happy to help. They are also happy to answer any questions you may have during your visit and are available to provide more information about the current exhibition.



If you would like to speak to a member of staff ahead of your visit, get in touch by e-mailing agy@yorku.ca or by calling **(416) 736-5169** during gallery hours. We will get back to you as soon as possible. Please allow two days for a response.

We hope that you enjoy your visit at the AGYU!